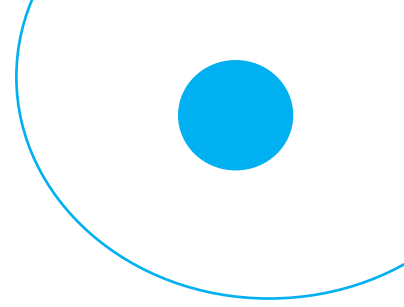
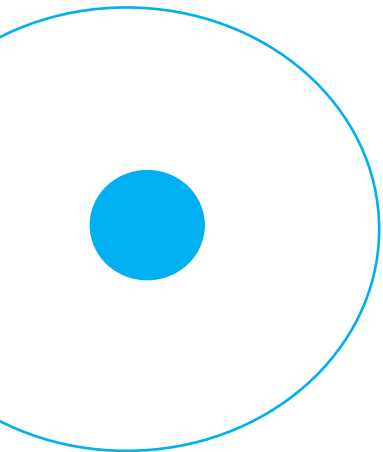


3nethra  
**neo HDFA**

---

Digital Wide-field  
Imaging System with  
FA



3nethra

**neo HDFA**

Ultra-Wide Imaging with Greater Field of view

The 3nethra neo HD FA is a compact, portable, and easy-to-use mydriatic wide-field digital imaging system with Fluorescein Angiography (FA) mode used for the photo documentation of ocular diseases in new born infants. It can capture colour and FA retinal images of the human eye. Ultra-wide-field fluorescein angiography can reveal areas of peripheral neovascularization and active leakage among infants



### Salient Features

150° FOV

Compact and Ergonomic Design

Telemedicine Compatible

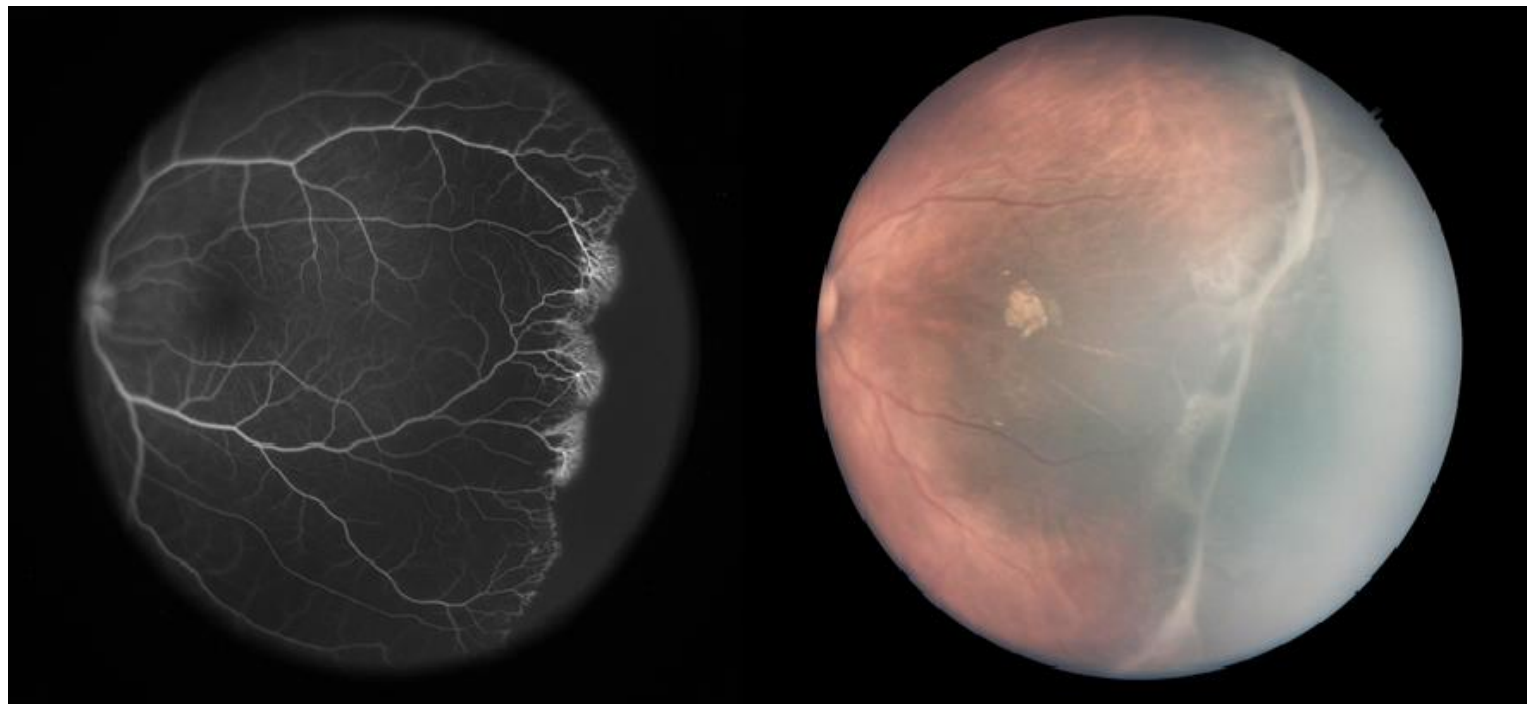
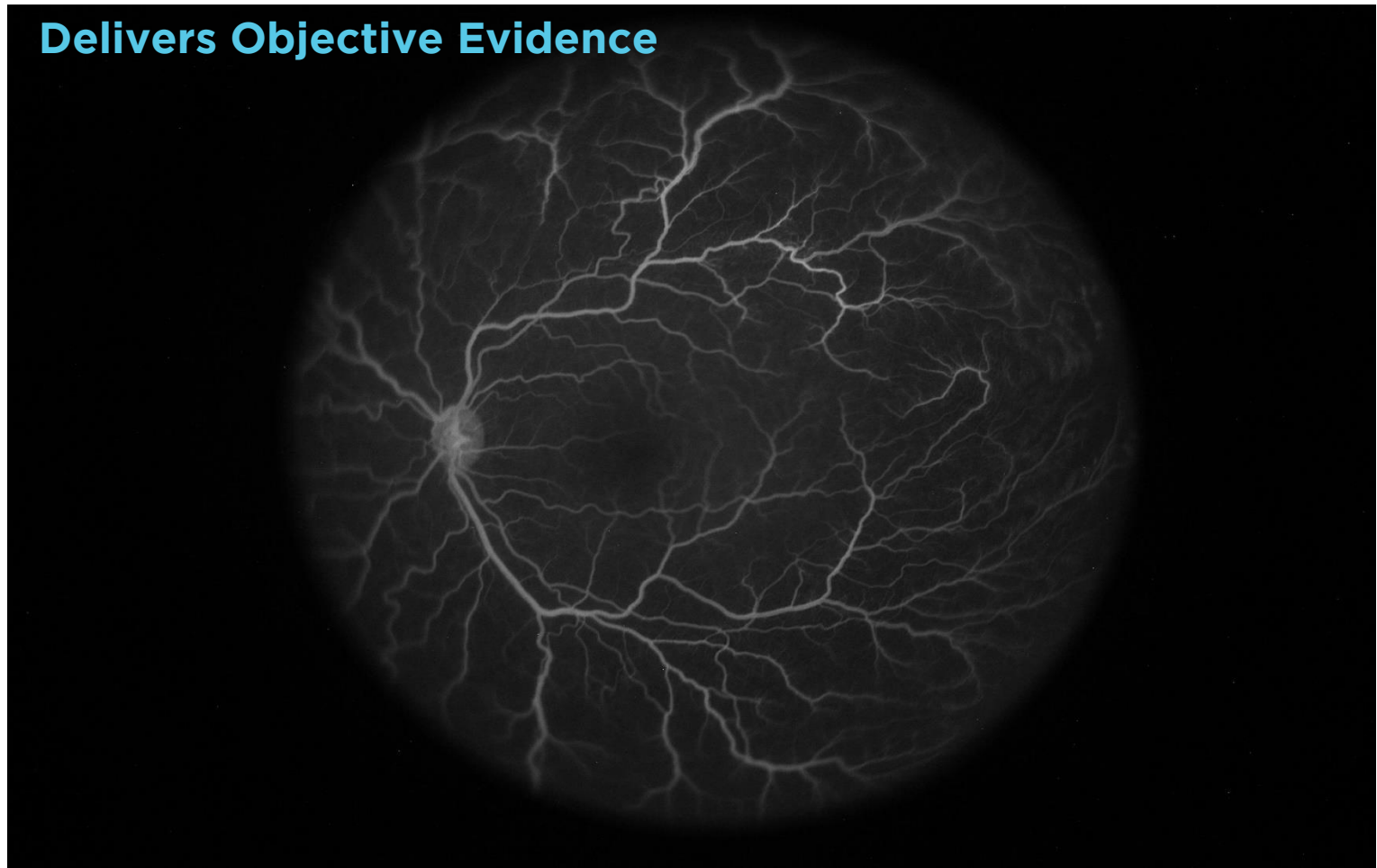
Fluorescein Angiography

20 Megapixel Sensor

Lightweight hand piece with pen-holder grasp



## Delivers Objective Evidence



Peak Phase: Contrast of blood vessels attains its peak

Peripheral Imaging

## Product Specifications

Parameters	Values
Imaging Modes	Colour fundus, FFA* and cornea
Field of view	150 degrees when measured from the centre of the eye
Minimum pupil diameter	4.0 mm
Light source	White and blue* LED intensity control via foot pedal
FFA Filter Switch*	Automatic
Universal Screening	Software controlled aperture for universal screening
Camera Resolution	5472 x 3648 pixels
Power supply	Uninterruptible AC 100-240 V, 50/60 Hz (for DC power adapter 5v/5A) and processing system.
Power consumption	<12 Watts (max)
Dimensions of Handheld unit	210 (L) x 70 (W) x 60 (H) mm
Weight of handheld unit	300 g (550 g with cable).
Dimensions of Transport Package	650 (L) x 430 (W) x 300 (H) mm.
Weight of Transport Package	12 Kgs.
Operating Environment	Temperature: 10-28 °C. Humidity: 30-90% (non-condensing). Atmospheric pressure: 80-106 kPa. Altitude: 0-2000 meters.
PC/Laptop requirement	MS Windows 10 64 bit OS based laptop/desktop with <ul style="list-style-type: none"> <li>- i5 processor, 2.4 GHz or higher</li> <li>- 8 GB RAM or higher</li> <li>- 500 GB or more hard disk space.</li> <li>- Display: Full HD (1920 x 1080 pixels)</li> <li>- At least 2 USB 3.0 ports.</li> </ul> The computer must conform to IEC 60950 Ed 2.0 or equivalent standard.
<p>Forus Health recommends to view images on a HD Wide Monitor having specifications such as LED backlit LCD 22 inch monitor having Full HD (1920 X 1080 pixels), HDMI Support having refresh rate of 75 Hz and Response Time of 5ms.</p>	

\* indicates specifications not applicable for 3nethra neo HD variant.



**Forus Health Pvt Ltd**  
#2234, 23rd Cross,  
Banashankari 2<sup>nd</sup> Stage,  
Bangalore,  
Karnataka - 560 070,  
India

India: +91 80 4162 4041 | 4162  
4042  
US: +1 510 488-6805  
Email: askus@forushealth.com  
Web: www.forushealth.com

**Forus Health Inc**  
3472 Lloyd Hill CT,  
Oakton, VA - 22124,  
USA.